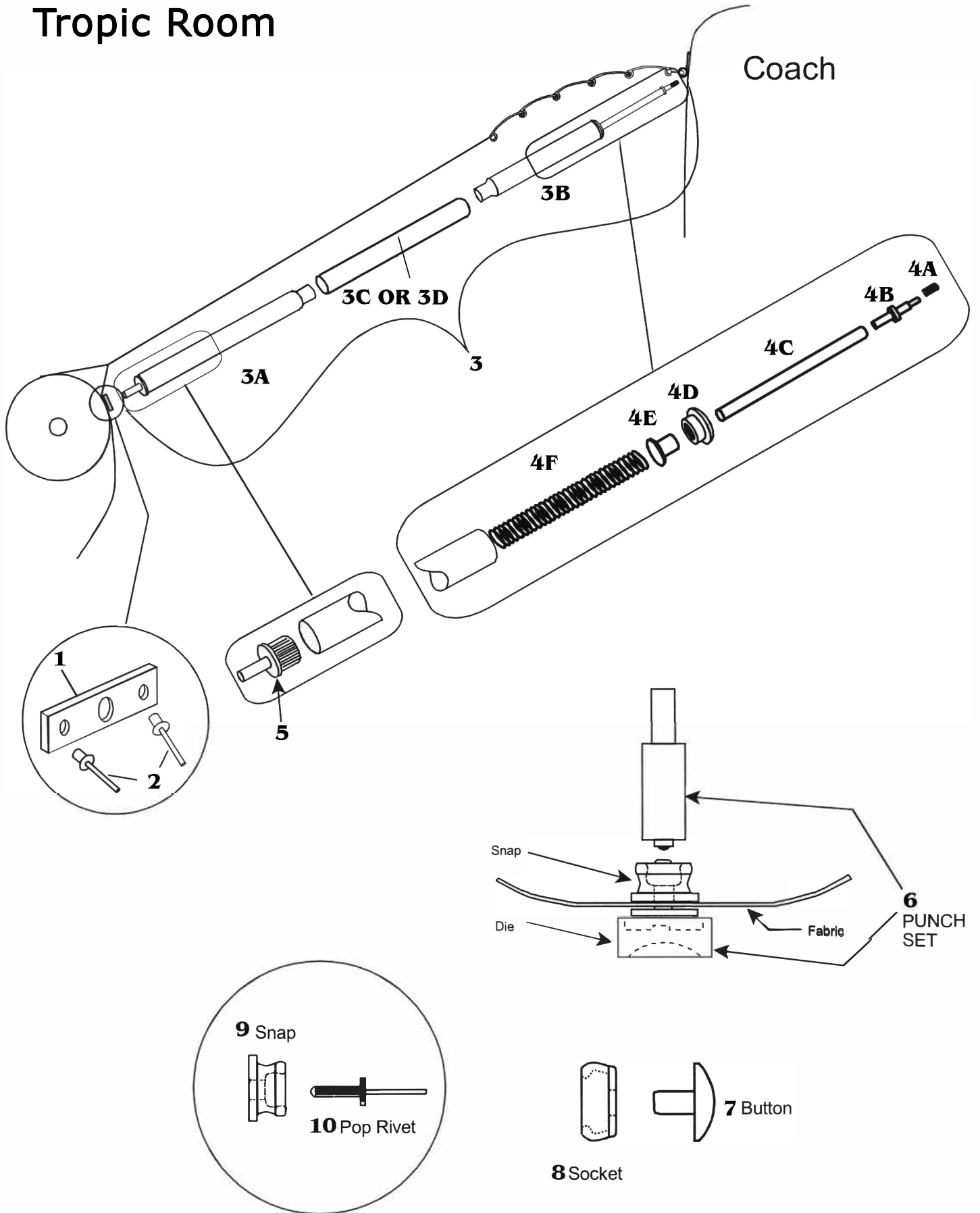


# Tropic Room



Ref #	PART #	TROPIC ROOM ...all years
1	299211	ROLLER PLATE (standard quantity 2)
2	316180	RIVET, 6/32 X 4/16, BLIND (standard quantity 4)
3	249200	<b>POLE ASSEMBLY COMPLETE, includes: (standard quantity 2)</b>
3A	334020	POLE, 31" X 1", SWAGGED
3B	334030	POLE, 20" X 1", SWAGGED
3C	334040	POLE, 31" X 1", STRAIGHT (or)
3D	334050	POLE, 28" X 1", STRAIGHT
4A	321242	CAP, VINYL
4B	325150	PLUG, 1/2"
4C	334010	POLE, 22" X 1/2", STRAIGHT
4D	321150	GROMMET, TUBULAR
4E	321140	PLUG, SPRING PUSHER
4F	322120	SPRING, TROPIC ROOM
5	249210	POLE PIN AND PLUG ASSEMBLY
6	355020	BUTTON/SOCKET SETTING TOOL SET (punch set)
		<b>BUTTONS:</b>
7	355140	FRONT & SIDE PANEL "LIFT DOT" (standard quantity 14)
7	355060	SKIRT PANEL, PLAIN (standard quantity 29)
		<b>SOCKETS:</b>
8	355130	FRONT & SIDE PANEL "LIFT DOT" (standard quantity 14)
8	355071	SKIRT PANEL, PLAIN (standard quantity 29)
		<b>STUDS:</b>
9	355120	FRONT & SIDE PANEL "LIFT DOT" (standard quantity 14)
9	355080	SKIRT, RIVET STYLE (standard quantity 29)
9	355100	SKIRT, SCREW STYLE
		<b>RIVETS, 1/8" DIA., BLIND</b>
10	316200	STEEL FOR FRONT & SIDE PANELS (standard quantity 14)
10	316190	ALUMINUM FOR SKIRT PANEL (standard quantity 29)
NS	299401	<b>COMPLETE TROPIC ROOM INSTALLATION KIT, includes:</b> ITEMS 1, 2, 6A, 9A, 9B, 10A, 10B
<b>ALL OF THE FOLLOWING REQUIRE SPECIFIC MEASUREMENTS; SEE TROPIC ROOM MEASURING INSTRUCTIONS</b>		
NS	240100	*SCREENED FRONT PANEL, STANDARD HEIGHT
NS	240110	SOLID FRONT PANEL, STANDARD HEIGHT
NS	24111F/R	COMPLETE END PANEL, SCREENED, POLYESTER TRIM
NS	24113F/R	COMPLETE END PANEL, SOLID POLYESTER
NS	242400	BASE SKIRT -TEXTURED POLYESTER
NS	353080	WATER TUBES 8' LONG
	353100	WATER TUBES 10' LONG

