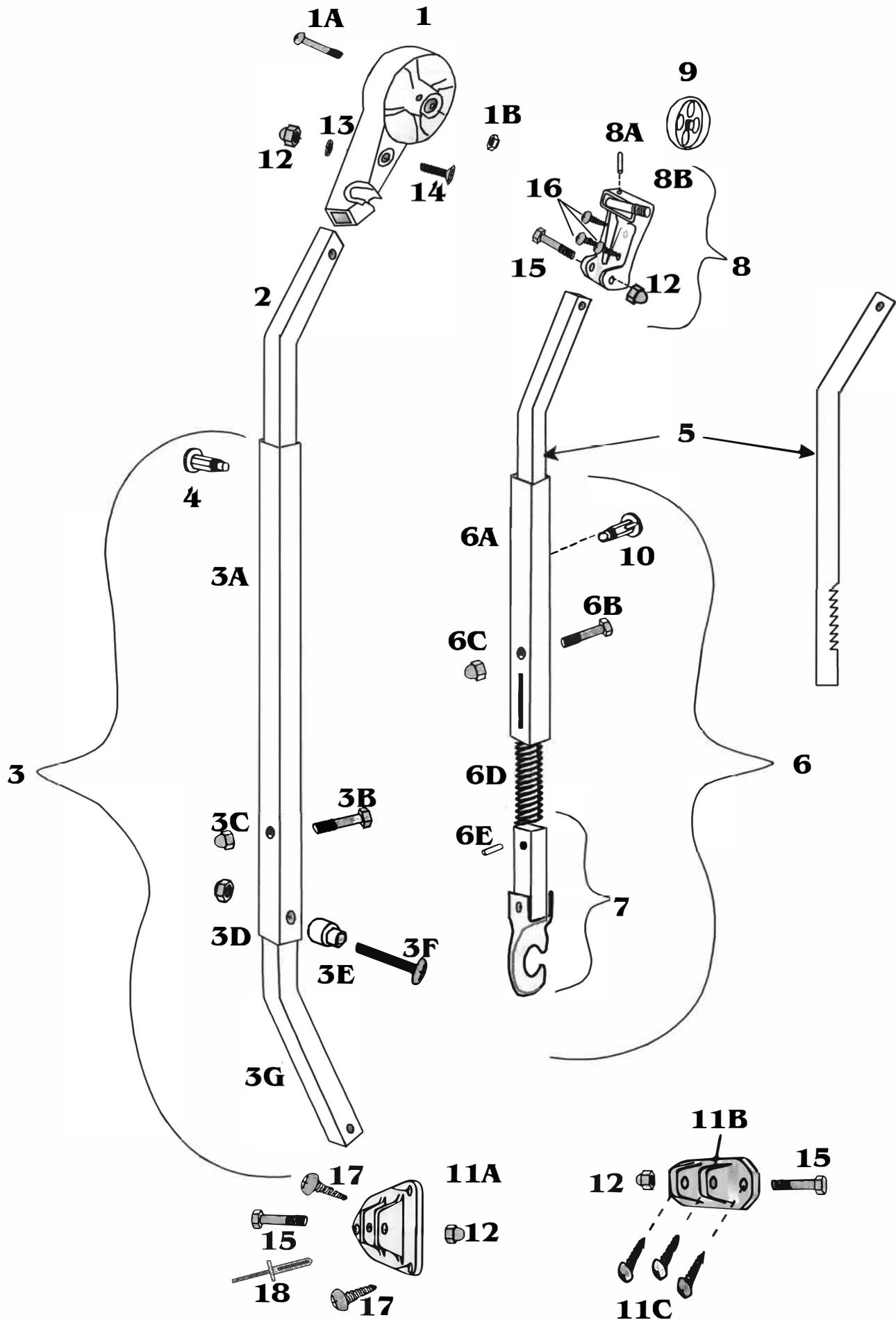


# Contour Hardware installed 1989 to Present



Ref #	PART #	CONTOUR HARDWARE installed 1989 TO PRESENT
1	21012F/R-XXX	<b>HEAD CASTING, FRONT/REAR (red logo), includes:</b>
1A	317212	BOLT, 10/32 x 1-1/2", HARDENED STEEL
1B	311070	NUT, 10/32, NYLOCK HEX (stainless)
2	21300F/R-XXX	FRONT/REAR MAIN ARM BAR (stainless)
2	71300F/R-XXX	FRONT/REAR MAIN ARM BAR (aluminum)
3	21110F/R-XXX	<b>BRIGHT FRONT/REAR MAIN ARM TUBE ASSEMBLY, includes:</b>
3	71110F/R-XXX	<b>SATIN FRONT/REAR MAIN ARM TUBE ASSEMBLY, includes:</b>
3A	211100-XXX	BRIGHT MAIN ARM TUBE (or)
3A	711100-XXX	SATIN MAIN ARM TUBE
3B	310040	BOLT, 1/4 - 20 X 1-1/4", HEX HEAD
3C	311020	CAP NUT, 1/4 - 20 (aluminum)
3D	311060	NUT, 1/4 - 20, NYLOCK HEX (stainless)
3E	325215	STEP SPACER, 1/4"
3F	317203	STUD PIN, 1/4 - 20 X 2"
3G	211400-XXX	BRIGHT HINGE BAR (or)
3G	711400-XXX	SATIN HINGE BAR
4	290002	SNAP STUD ASSEMBLY
5	214100-XXX	BRIGHT RAFTER ARM BAR
5	714100-XXX	SATIN RAFTER ARM BAR
6	212200-XXX	<b>BRIGHT RAFTER ARM TUBE ASSEMBLY, includes:</b>
6	712200-XXX	<b>SATIN RAFTER ARM TUBE ASSEMBLY, includes:</b>
6A	212100-XXX	BRIGHT RAFTER ARM TUBE (or)
6A	712100-XXX	SATIN RAFTER ARM TUBE
6B	310030	BOLT, 1/4 - 20 X 1-3/8", HEX HEAD
6C	311020	CAP NUT, 1/4 - 20 (aluminum)
6D	322100	COMPRESSION SPRING, 6-3/4"
6D	322110	COMPRESSION SPRING, 4-1/4"
6E	313220	GUIDE PIN, 1/8 X 5/8
7	218610-XXX	BRIGHT CLAW BAR ASSEMBLY (or)
7	718610-XXX	SATIN CLAW BAR ASSEMBLY
10	290001	RATCHET STUD ASSEMBLY
11A	210050	BASE HINGE, TRIANGULAR (rib mount)
11B	210060	BASE HINGE, RECTANGULAR (floor mount)
11C	317040	SCREW, 14 X 2", SHEET METAL (stainless)
8	210121	FRONT CURVED CLAMP ASSEMBLY, includes:
8A	313040	DRIVE PIN, 1 X 1/8"
8B	325110	THREADED STUD, 3/8 - 16
8	210122	REAR CURVED CLAMP ASSEMBLY, includes above
9	210390	CLAMP WHEEL
	299010-XXX	<b>CONTOUR HARDWARE MOUNTING KIT, includes:</b>
12	311010	(6) NUT, 1/4 - 20, ACORN CAP (stainless)
13	312010	(2) LOCKWASHER, 1/4" (stainless)
14	317190	(2) BOLT, 1-3/8", FLAT HEAD
15	310010	(4) BOLT, 1/4 - 20 X 1-5/8", HEX HEAD
16	317030	(6) SCREW, 10 X 3/4", PAN HEAD
17	317050	(4) SCREW, 14 X 1", PAN HEAD
18	316030	(2) RIVET, 3/16 X 1", OLYMPIC
	1HD10F/R-XXX	BRIGHT HALF SET OF HARDWARE, FRONT/REAR
	1HS10F/R-XXX	SATIN HALF SET OF HARDWARE, FRONT/REAR
	1HE10F/R-XXX	SATIN HALF SET OF ALTERNATIVE HARDWARE, FRONT/REAR

(XXX) - YEAR, MAKE, MODEL OF COACH REQUIRED

