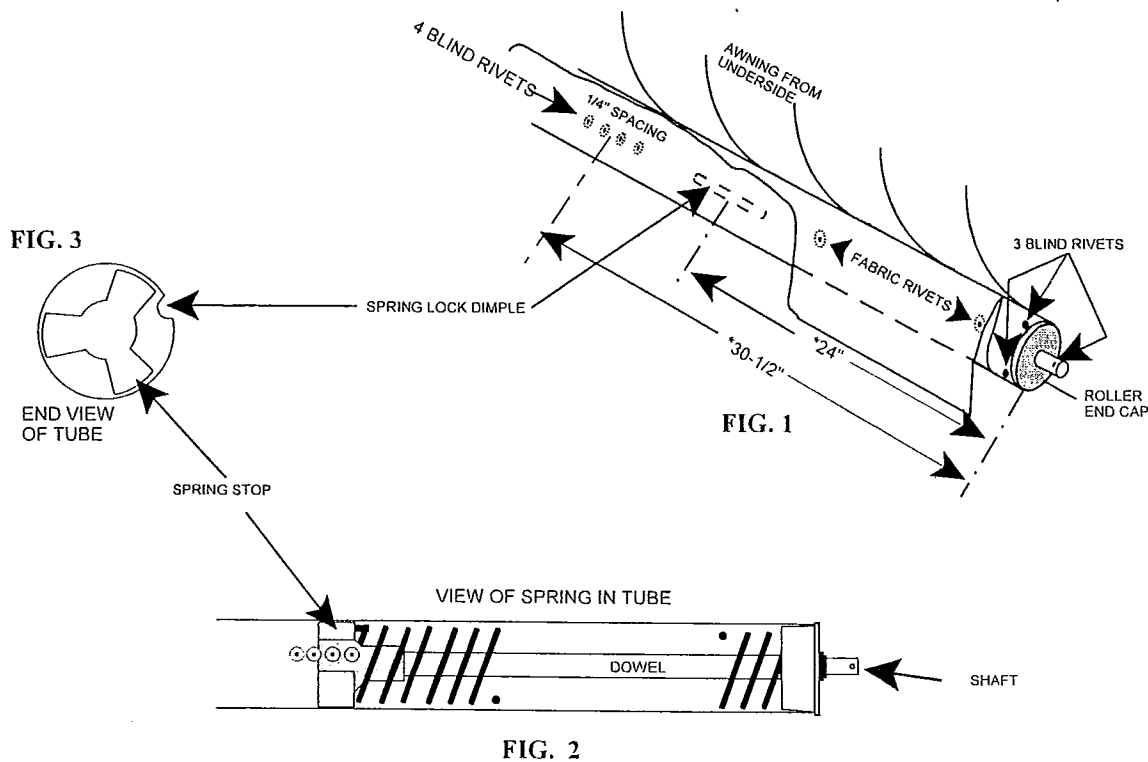


SLIDE-OUT SPRING REPLACEMENT

R5S



* Mfg. as 24" 3/1/95 - 5/31/97; 30 1/2" 6/1/97 to present

A. TO REMOVE TENSION FROM THE SPRING; WARNING: USE CAUTION WHEN RELEASING TENSION!

1. With the slide-out closed, open the awning until the fabric is completely unrolled.
2. With a second person holding the awning roller away from the vehicle, (Fig. 4) Hold the left support arm securely and unbolt from the hinge. Unwind the arm counter clockwise until there is no tension on the spring.
3. Reattach the arm to the hinge.

B. TO REMOVE PRESENT SPRING:

1. Remove the cotter pin that holds the head casting to the spring shaft.
2. Drill out three blind rivets in the roller end cap (#20 or 3/16 drill).
3. Pull out spring assembly using vise grips. Grip shaft and pull with twist motion to allow the spring stop casting to bypass the fabric rivets.

C. TO SECURE INSIDE CASTING:

1. Check the tube for a spring lock dimple (Fig.1). If the dimple is at 32 1/2" skip to step D.
2. If the dimple is at 24", lift the valance and drill through fabric and tube in line with existing fabric rivets. Drill four #20 or 3/16" holes 1/4" apart as shown in Fig.1 and insert 5/32" X 3/16" blind rivets.

D. TO INSTALL SPRING:

1. Line up the space on the spring stop (Fig.2 & 3) with the fabric rivets so you can insert the spring without hitting the rivets.
2. Insert the spring into the tube. Drill and secure end cap using #20 or 3/16" drill and 5/32" x 3/16" blind rivets.
3. Connect the head castings to the roller shafts with 1/8" cotter pins. Bend the split ends of the pins with pliers to hold in place (see Fig.5).

INSTRUCTIONS FOR WINDING SLIDEOUT AWNING TORSION SPRING:

Caution: when rewinding existing spring, find dimple in tube (fig. 1) to determine spring length.

With a second person holding the awning roller firmly away from the vehicle, (Fig. 4) unbolt the left support arm from the hinge and wind the arm clockwise **18 revolutions on slideouts with 24" spring (mfg. To 5/31/97) and 28 revolutions on awnings with 30 1/2" spring (after 6/1/97)**. Bolt the arm to the hinge. Securely tighten all nuts and bolts.

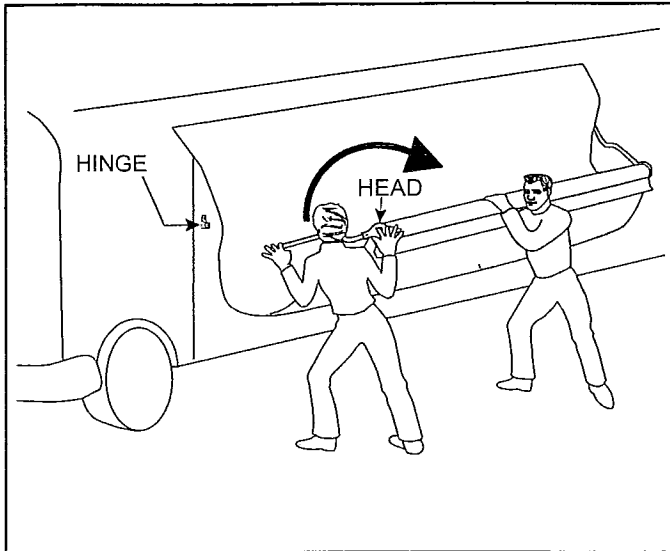


Figure 4

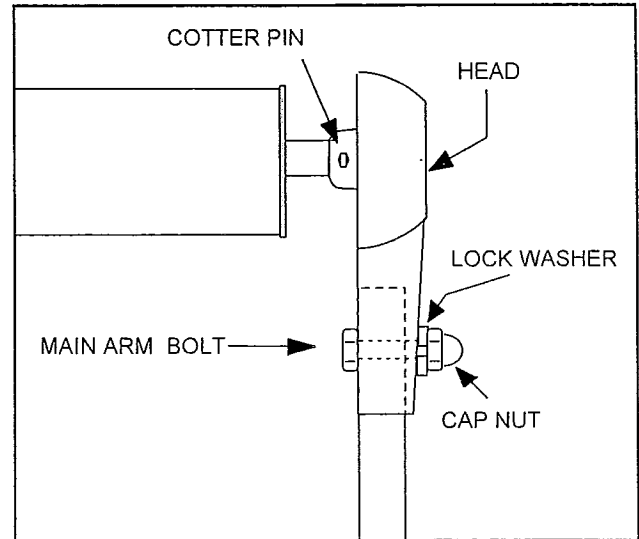


Figure 5